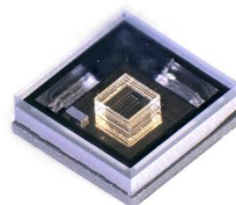
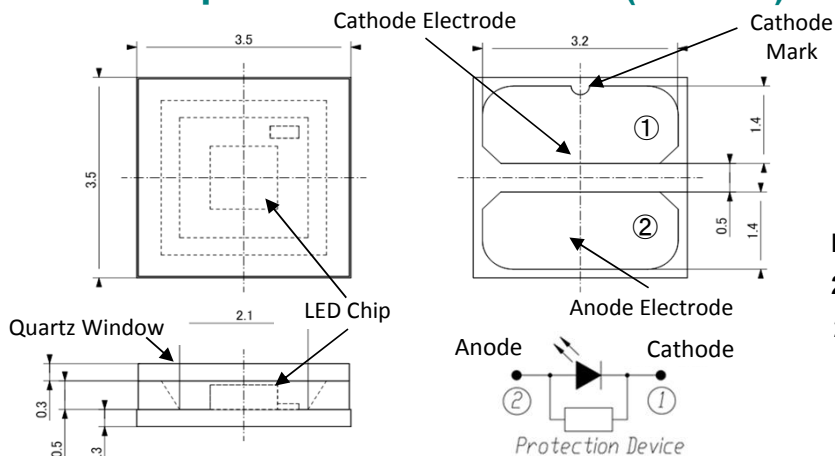


High-power SMD package MODEL YL-P3535F-xxxnM(ZV) 3.5 x 3.5mm SMD Flat Top Type

Mechanical Specifications and Materials (Unit: mm)



Product ID
275nm: YL-P3535F-275nM(ZV)
280nm: YL-P3535F-280nM(ZV)

Typical Optical-Electrical Characteristics

IF=350mA, Ts=25°C

Item	Symbol	Unit	275nM			280nM		
			Min	Typ	Max	Min	Typ	Max
Peak Wavelength(*)	λ_p	nm	270	275	280	275	280	285
Radiant Flux(**)	P_o	mW	-	40	-	-	40	-
Full Width at Half Maximum	$\Delta\lambda$	nm	-	11	-	-	11	-
Forward Voltage	V_F	V	-	6.1	-	-	6.1	-

IF=800mA, Ts=25°C

Item	Symbol	Unit	275nM			280nM		
			Min	Typ	Max	Min	Typ	Max
Peak Wavelength(*)	λ_p	nm	-	(275)	-	-	(280)	-
Radiant Flux(**)	P_o	mW	-	(75)	-	-	(75)	-
Full Width at Half Maximum	$\Delta\lambda$	nm	-	(11)	-	-	(11)	-
Forward Voltage	V_F	V	-	(6.9)	-	-	(6.9)	-

(*)Peak Wavelength Measurement tolerance is ± 3 nm.

(**)Radiant Flux Measurement tolerance is $\pm 10\%$.

Specification and dimension are subject to change for improvement without notice.

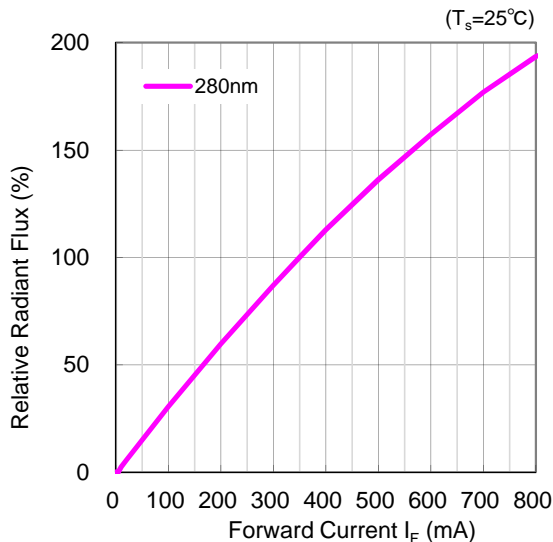
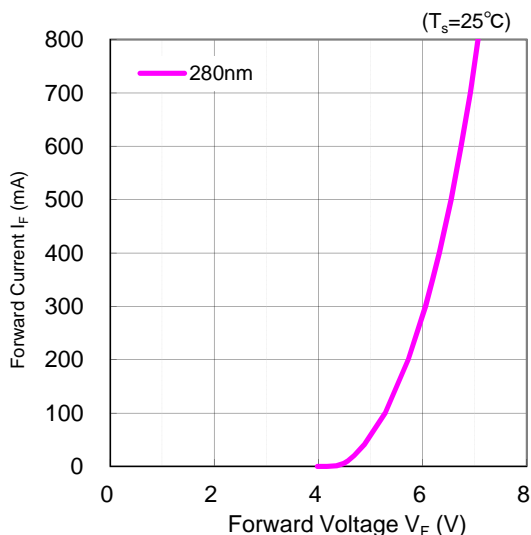
WARNING	
	<ul style="list-style-type: none"> • LEDs emit very strong UV radiation. • Do not look at the LED light with the naked eye or irradiate the skin. UV radiation can harm your eyes and skin. • To prevent UV radiation exposure, wear protective eyewear and protective equipment. • If LEDs are embedded in devices, please indicate warning labels against the UV light LED used. • Keep out of reach of children.

High-power SMD package MODEL YL-P3535F-xxxnM(ZV)

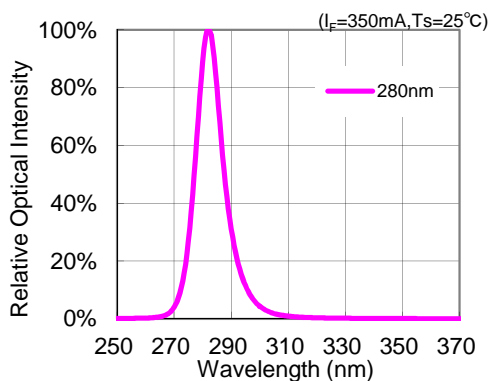
3.5 x 3.5mm SMD Flat Top Type

Forward Voltage vs Forward Current

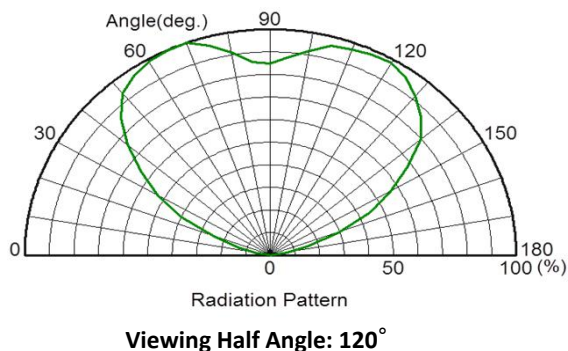
Forward Current vs Radiant Flux



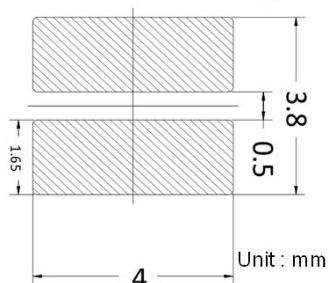
Spectrum



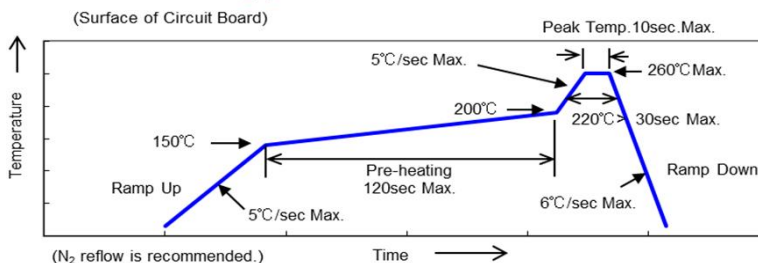
Radiation Pattern



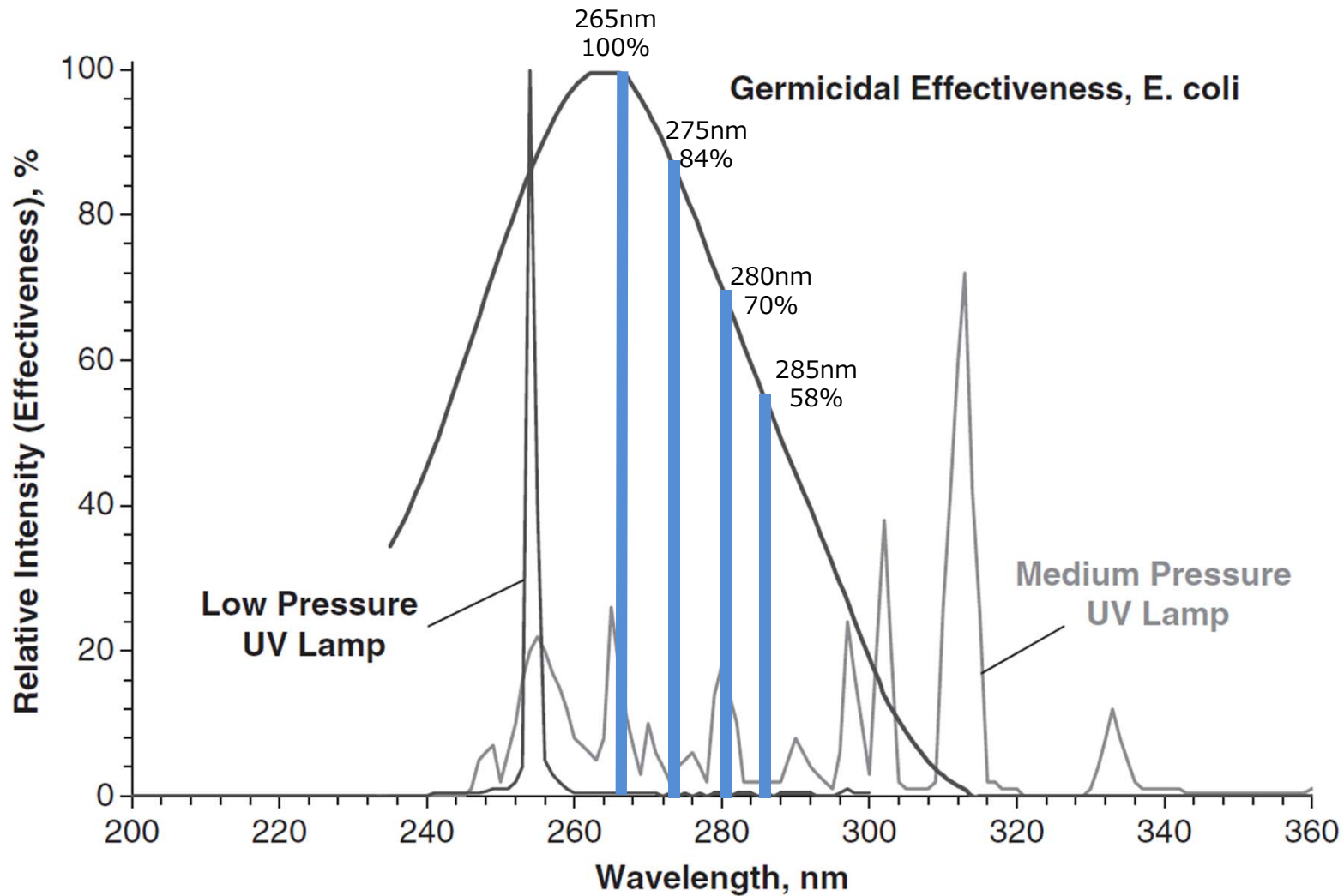
Recommended solder pad



Reflow soldering profile



Germicidal Effectiveness vs Wavelength



Low-pressure & medium-pressure mercury lamps compared to e.coli germicidal effectiveness curve. Ultraviolet Germicidal Irradiation Handbook - Fig. 2.1.