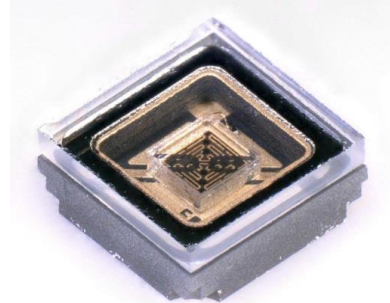
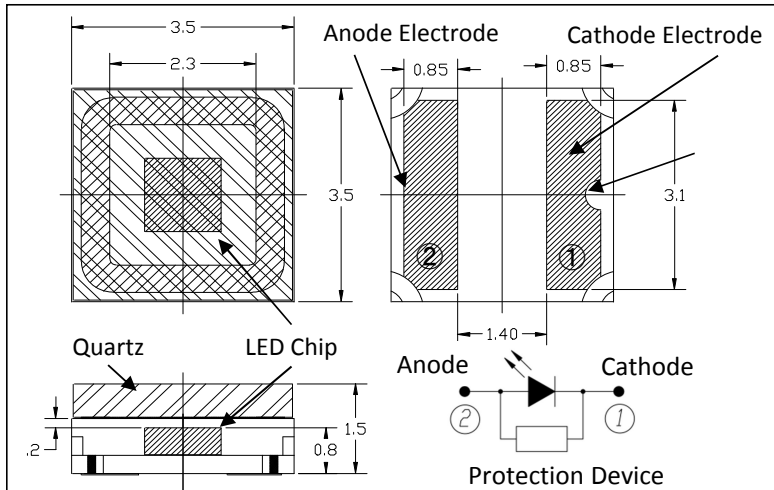


## MODEL YL-P3535F-xxxnM(XU) series

### 3.5 x 3.5mm Metal Sealed SMD Flat Top Type

#### Mechanical Specifications and Materials (Unit: mm)



#### Product ID

**280nm: YL-P3535F-280nM(XU)**

**310nm: YL-P3535F-310nM(XU)**

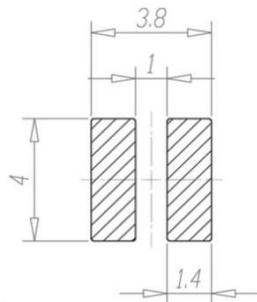
**325nm: YL-P3535F-325nM(XU)**

**340nm: YL-P3535F-340nM(XU)**

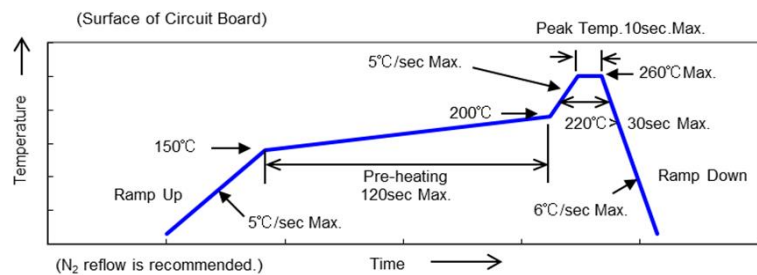
#### Typical Optical-Electrical Characteristics ( $I_F=350\text{mA}$ , $T_a=25^\circ\text{C}$ )

Item	Symbol	Unit	280nm			310nm			325nm			340nm		
			Min	Typ	Max	Min	Typ	Max	Min	Typ	Max	Min	Typ	Max
Peak Wavelength	$\lambda_p$	nm	270	280	290	303	308	313	320	325	330	335	340	345
Radiant Flux	$P_o$	mW	20	25	-	20	36	-	20	30	-	20	30	-
Full Width at Half Maximum	$\Delta\lambda$	nm	-	12	-	-	14	-	-	13	-	-	10	-
Forward voltage	$V_F$	V	-	5.4	-	-	5.3	-	-	5.1	-	-	5.0	-
Viewing Half Angle	$2\theta_{1/2}$	deg.	-	120	-	-	120	-	-	120	-	-	120	-

#### Recommended solder pad



#### Reflow soldering profile



#### CAUTION

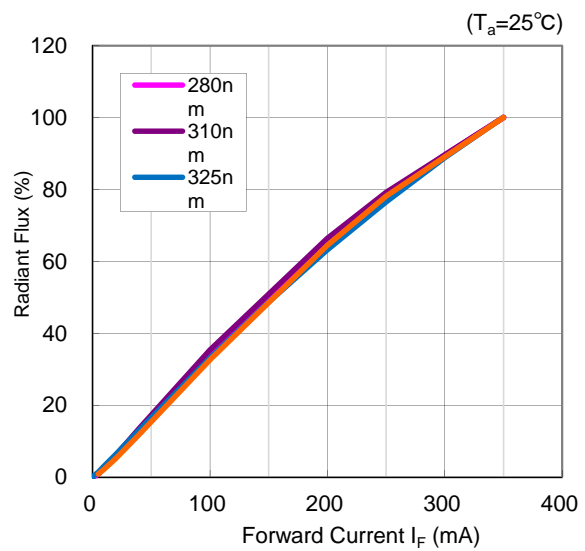
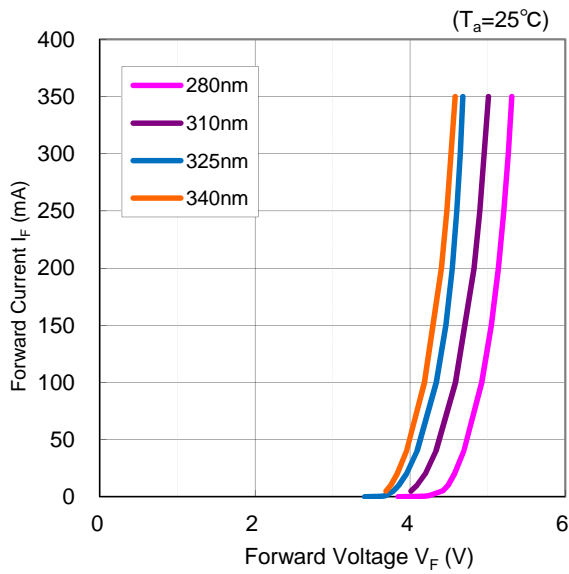
- LEDs emit very strong UV radiation.
- Don't look directly into the LED light.  
UV radiation can harm your eyes.
- To prevent even inadequate exposure, wear protective eyewear.
- If LEDs are embedded in devices, please indicate warning labels against the UV light LED used.
- Keep out of reach of children.
- Specification and dimension are subject to change for improvement without notice.

## MODEL YL-P3535F-xxxnM(XU) series

### 3.5 x 3.5mm Metal Sealed SMD Flat Top Type

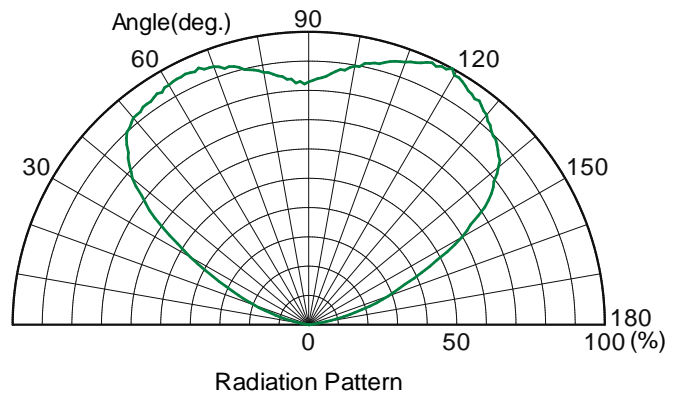
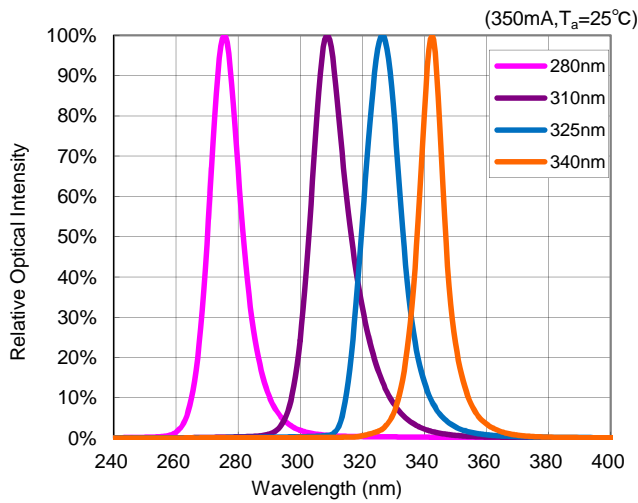
**Forward Current vs Forward Voltage**

**Forward Current vs Radiant Flux**



**Spectrum**

**Radiation Pattern**



Issued February 2017. SPEC information (included design, dimension, and typical data) would be changed without prior notice.