

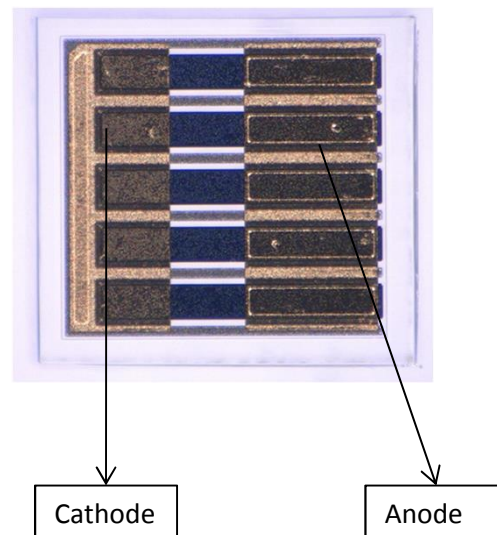
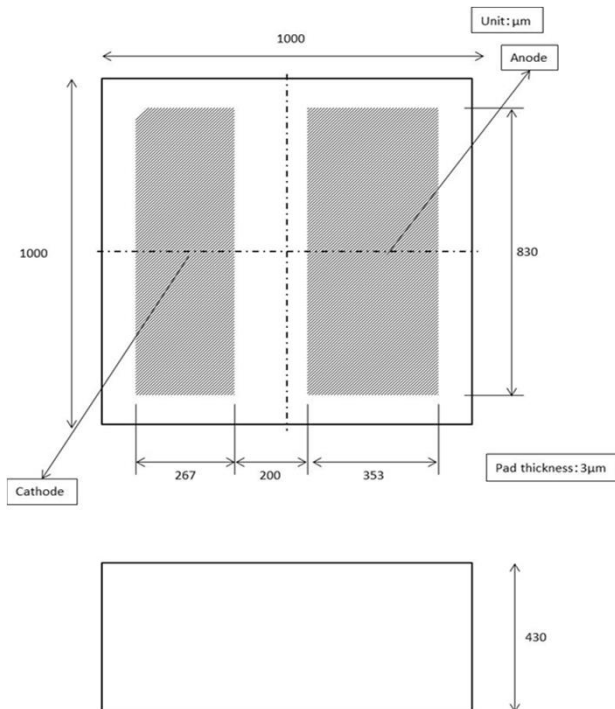
Model MC00 series Bare Die (Flip chip form, Au Pad)



Typical Optical-Electrical Characteristics

($I_F=350\text{mA}$, $T_a=25^\circ\text{C}$)

Item	Symbol	Unit	265nm		
			Min	Typ	Max
Peak Wavelength	λ_p	nm	260	265	270
Radiant Flux	P_o	mW	-	30	-
Full Width at Half Maximum	$\Delta\lambda$	nm	-	10	-
Forward Voltage	V_F	V	-	5.8	-

Product ID, Physical dimensions and Sample photo YL-PC265-MC00

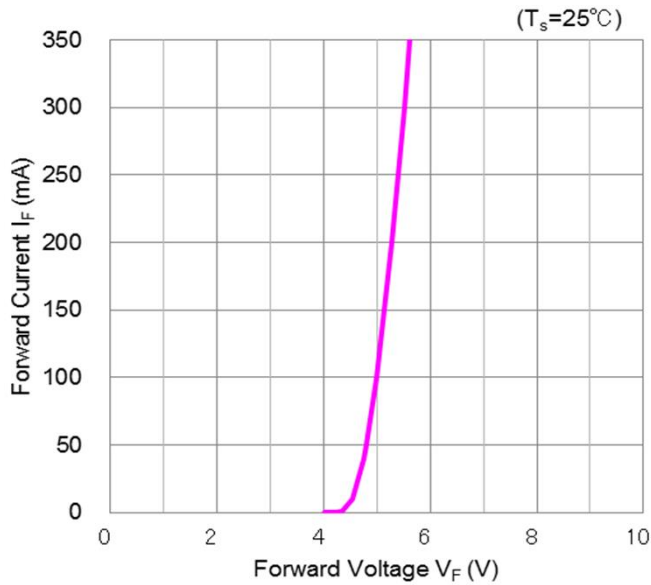


	 WARNING
	<ul style="list-style-type: none"> • LEDs emit very strong UV radiation. • Do not look at the LED light with the naked eye or irradiate the skin. • UV radiation can harm your eyes and skin. • To prevent UV radiation exposure, wear protective eyewear and protective equipment. • If LEDs are embedded in devices, please indicate warning labels against the UV light LED used. • Keep out of reach of children. • Specification and dimension are subject to change for improvement without notice.

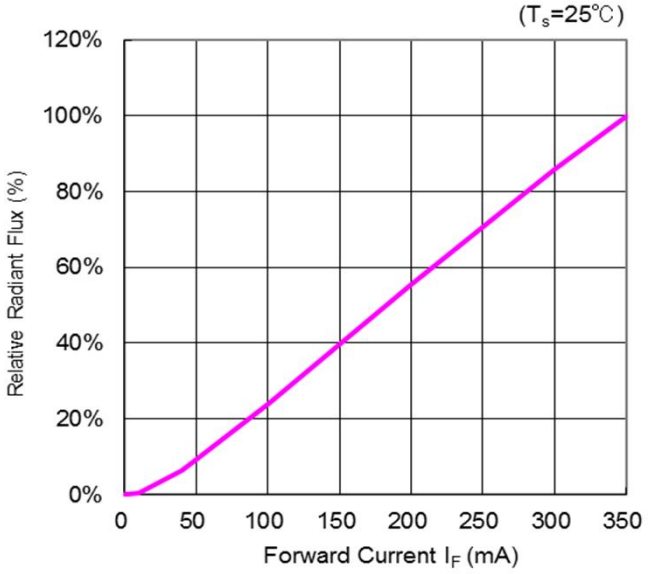
Model MC00 series

Bare Die (Flip chip form, Au Pad)

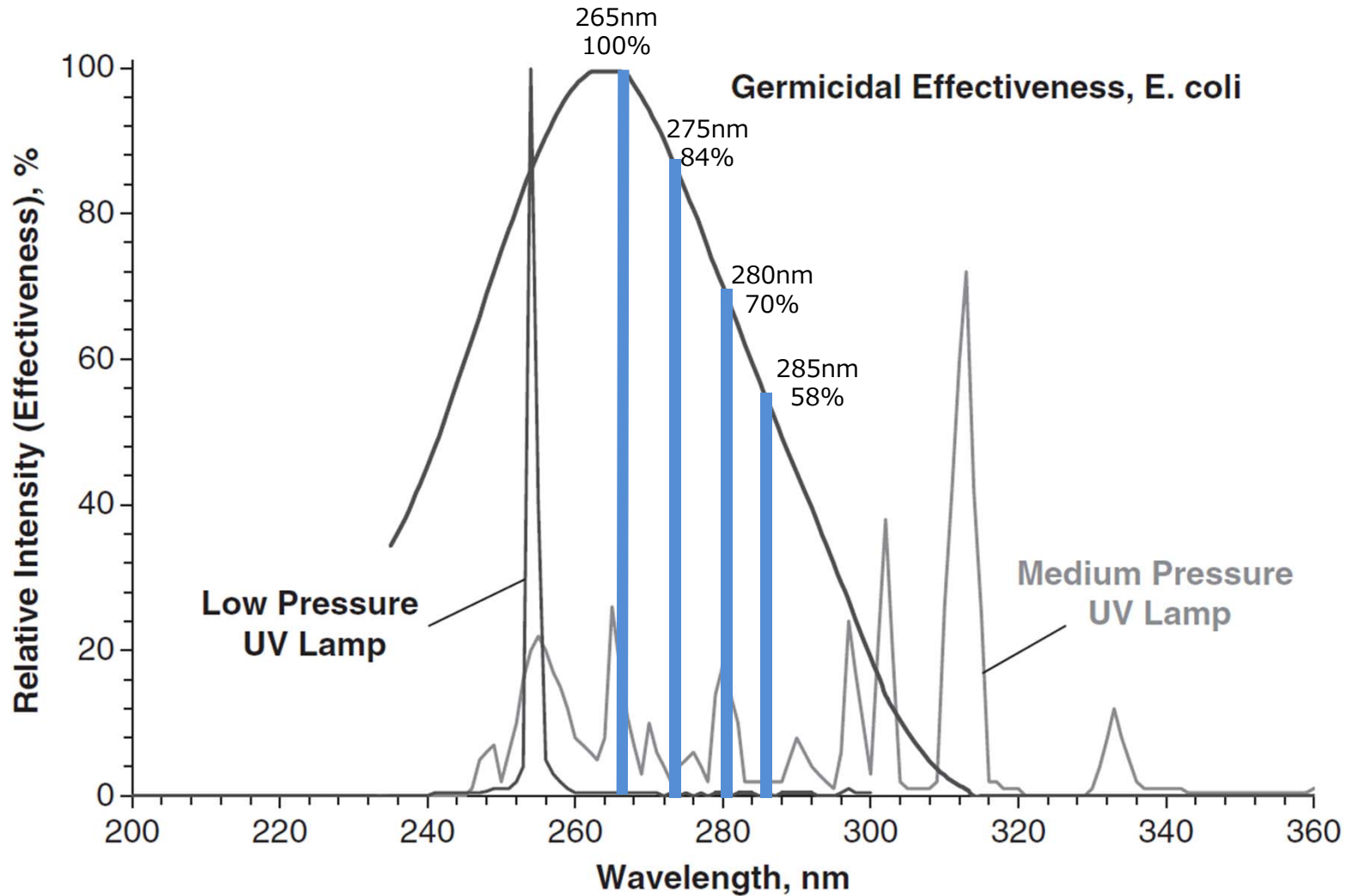
Forward Voltage vs Forward Current



Forward Current vs Radiant Flux



Germicidal Effectiveness vs Wavelength



Low-pressure & medium-pressure mercury lamps compared to e.coli germicidal effectiveness curve. Ultraviolet Germicidal Irradiation Handbook - Fig. 2.1.