

YesLED Lighting

Emitter Series / High Weather Resistance Type

NEW!

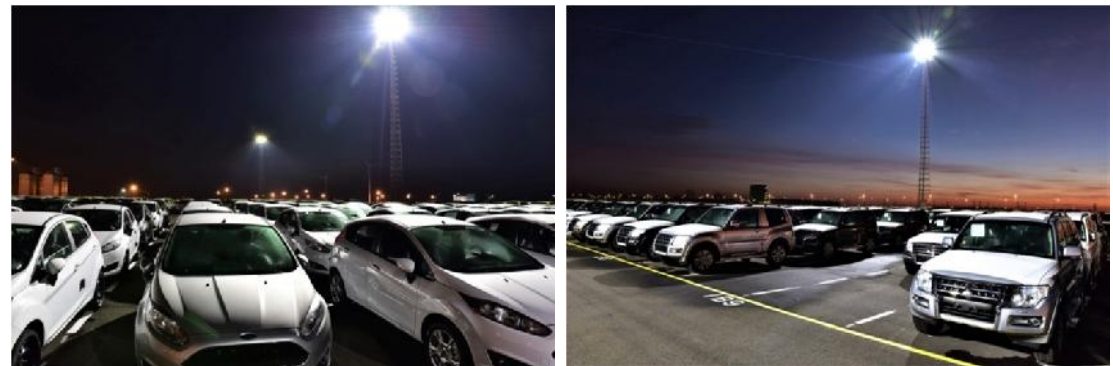
YesLED.com



Product Specifications

Model number	YL-FL340W
Power consumption	340W
Instrument light flux	38,000 lm
Consumption efficiency	111 lm/W
Color temperature	5000 K
Color rendering property	Ra 70
Distribution angle (horizontal direction / vertical direction)	Narrow $\theta=18^\circ$ / $\theta=18^\circ$, Middle $\theta=70^\circ$ / $\theta=70^\circ$
Power supply (LED driver)	2 pcs / set (integrated type or separate type)

Case



Properties

High efficiency
111lm/W

Energy saving effect
1000W.→340W.

Vibration
resistance
Enhance

Light
distribution
control by
optical lens

Aluminum
-Die-cast
Anti-corrosive
finish

Outdoor

Operating
temperature
-20-60°C

Lightning surge
protection

★ Acquired "Nippon Kaiji Kyokai Association"
type certification "
In the case of
As LED light for port

FIRST