

IR

740nm, 850nm

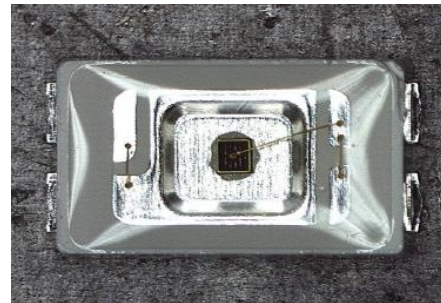
Radiant Power
(mW)

Emitter

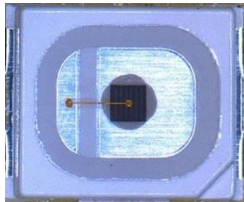
Ceramic
3535



5630 SMD



2835 SMD



0.2W~0.5W

0.5W

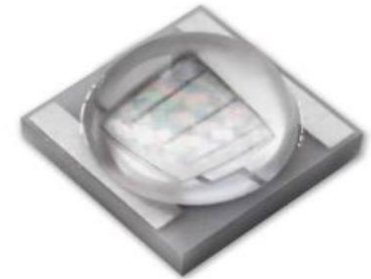
1~3W

Color

R	620nm~630nm
G	515nm~535nm
B	455nm~465nm
A	585nm~595nm

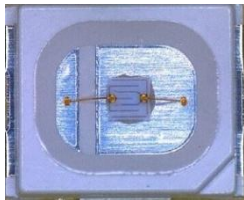
Emitter

Ceramic
3535



5630 SMD

2835 SMD



0.2W~0.5W

0.5W

1~3W

White

White	5700K~7500K
Neutral White	3800K~4500K
Warm White	2800K~3500K

2835 SMD



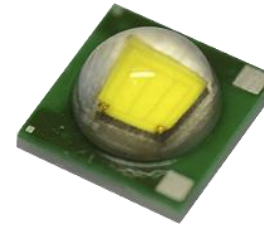
0.2W~0.5W

Emitter



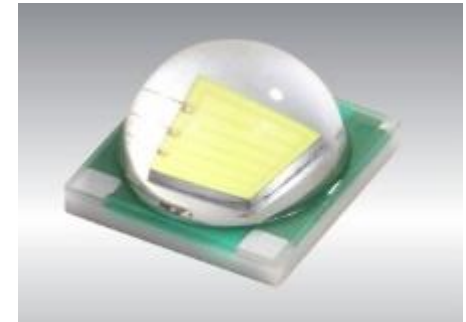
1~3W

**Ceramic
3535**



1~5W

**Ceramic
5050**



7~10W

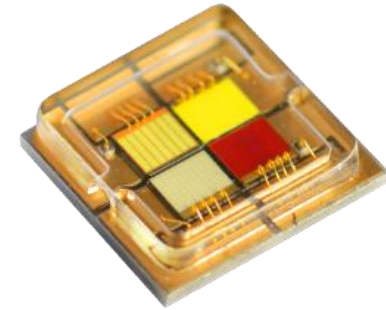
Multi Color



5050 XML 4 in 1

	Color	If (mA)	Vf (V)	Wd (nm)/CCT (K)	Lumen (lm)	Max. Current
5050L- RGBW	R	350	2.5-3.2	620-630	65-85	700mA
	G	350	3.2-3.8	515-530	90-120	700mA
	B	350	3.2-3.8	450-460	15-30	700mA
	W	350	3.2-3.8	6000-7500	100-130	700mA
5050H- RGBW	R	700	2.5-3.2	620-630	75-100	1000mA
	G	700	3.2-3.8	515-530	150-180	1000mA
	B	700	3.2-3.8	450-460	30-60	1000mA
	W	700	3.2-3.8	6000-7500	170-220	1000mA

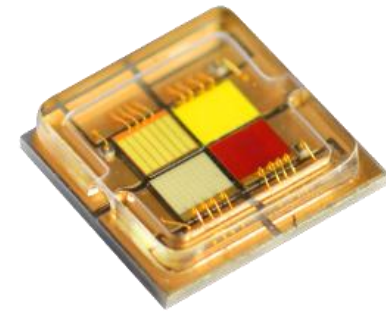
Multi Color



5060 Stage 4 in 1

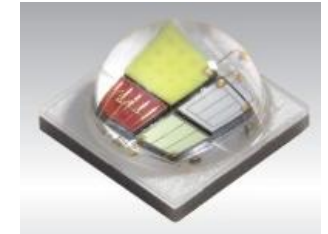
	Color	If (mA)	Vf (V)	Wd (nm)/CCT (K)	Lumen (lm)	Max. Current
5060L- RGBW	R	1000	2.5-3.2	620-630	105-125	1500mA
	G	1000	3.2-3.8	515-530	205-230	1500mA
	B	1000	3.2-3.8	450-460	30-45	1500mA
	W	1000	3.2-3.8	6000-7500	260-290	1500mA
5060H- RGBW	R	2000	2.5-3.2	620-630	150-170	2500mA
	G	2000	3.4-4.2	515-530	300-345	2500mA
	B	2000	3.4-4.2	450-460	50-75	2500mA
	W	2000	3.4-4.2	6000-7500	420-500	2500mA

Multi Color



6065 Stage 4 in 1

	Color	If (mA)	Vf (V)	Wd (nm)/CCT (K)	Lumen (lm)	Max. Current
6065- RGBW	R	4000	2.5-3.2	620-630	210-230	4500mA
	G	4000	3.4-4.2	515-530	480-520	4500mA
	B	4000	3.4-4.2	450-460	120-130	4500mA
	W	4000	3.4-4.2	6000-7500	720-900	4500mA



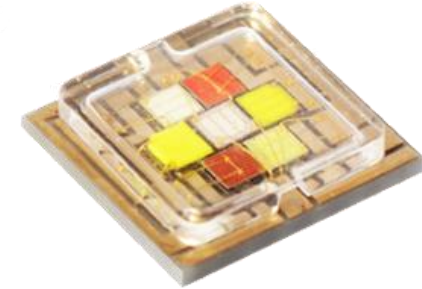
7090 MCE 4 in 1

Multi Color

	Color	If (mA)	Vf (V)	Wd (nm)/CCT (K)	Lumen (lm)	Max. Current
7090L- RGBW	R	1000	2.5-3.2	620-630	150-200	1500mA
	G	1000	3.2-3.8	515-530	190-240	1500mA
	B	1000	3.2-3.8	450-460	40-50	1500mA
	W	1000	3.2-3.8	6000-7500	250-310	1500mA
7090M- RGBW	R	2000	2.5-3.2	620-630	225-300	2500mA
	G	2000	3.4-4.2	515-530	285-360	2500mA
	B	2000	3.4-4.2	450-460	70-85	2500mA
	W	2000	3.4-4.2	6000-7500	480-610	2500mA
7090H- RGBW	R	4000	2.5-3.2	620-630	250-300	4500mA
	G	4000	3.4-4.2	515-530	570-625	4500mA
	B	4000	3.4-4.2	450-460	140-160	4500mA
	W	4000	3.4-4.2	6000-7500	850-1050	4500mA

Multi Color

7090 Stage 7 in 1



	Color	If (mA)	Vf (V)	Wd (nm)/CCT (K)	Lumen (lm)	Max. Current
7090- 7 in 1	R	1000	2.5-3.2	620-630	105-125	1500mA
	G	1000	3.2-3.8	515-530	205-230	1500mA
	B	1000	3.2-3.8	450-460	30-45	1500mA
	A	1000	2.5-3.2	590-595	110-125	1500mA
	W	1000	3.2-3.8	6000-7500	260-290	1500mA
	UV	1000	3.2-3.8	395-405	600(mW)	1500mA
	C	1000	3.2-3.8	462-472	200-240	1500mA