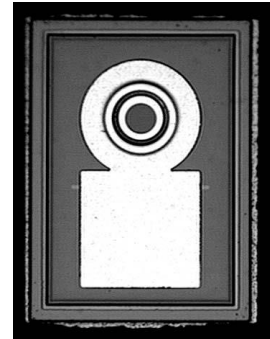




Features

- : 650 nm wavelength range
- : low current bias
- : Other configurations available on request

Description



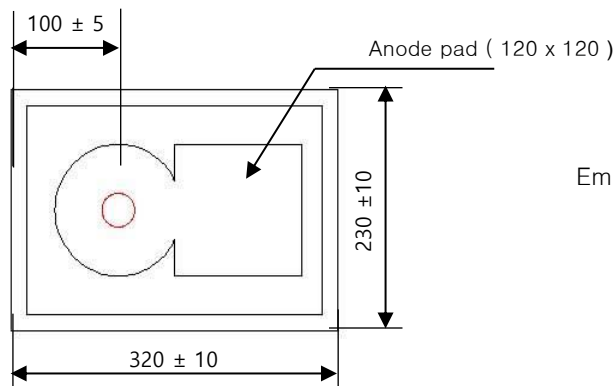
Applications

- : Industrial applications
- : Sensors

Absolute Maximum Ratings

Parameter	Rating
Storage Temperature	-40 to 100 °C
Operating Temperature	-20 to 70 °C
Continuous Forward Current	10mA
Continuous Reverse Voltage	5V (@10µA)

Dimensions



Emission area : Ø 30 µm

Unit : µm

Die Height : 200±15µm



**Electro-Optics Characteristics ( $T_a=25^\circ\text{C}$  unless otherwise stated)**

Parameters	Symbol	Specified			Unit	Test Conditions
		Min.	Typ.	Max.		
Total Radiant Flux	$\Phi_o$	0.2			mW	$I_f = 5\text{mA}$
Peak Wavelength	$\lambda_p$	640	650	665	nm	$I_f = 5\text{mA}$
Forward Voltage	$V_f$		2.1	2.4	V	$I_f = 5\text{mA}$
Breakdown Voltage	$V_b$		-10		V	

Test Data were measured in TO header of wire bonded chip

Value is referenced to the vender's measurement system (correlation to customer product is required).

**Notes**

\* These specifications are subject to change without notice.



**NOTICE**

The inherent design of this component causes it to be sensitive to electrostatic discharge(ESD). To prevent ESD-induced damage and/or degradation to equipment, take normal ESD precautions when handling this product