



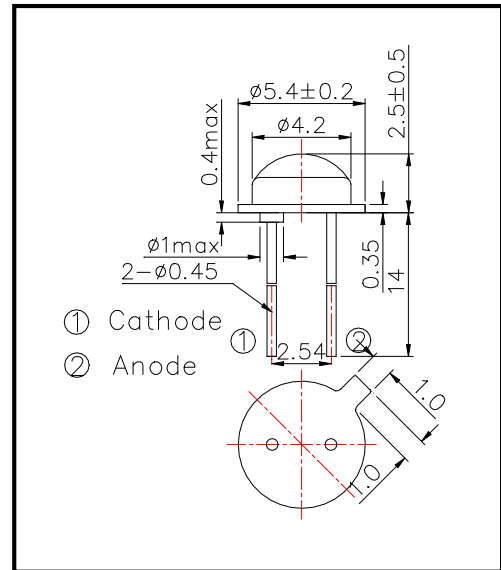
PD023F00 stem type photo-diode

PD023F00 is a PIN-photodiode featuring excellent responsibility and high photocurrent. This PIN-photodiode consists of a large chip with 2.0mm*2.0mm active area mounted on the TO-46 stem and is sealed with epoxy resin. These devices are designed to be easy of setting up optically with a wide angle of half sensitivity.

◆ Specifications

- 1) Product Name Stem Type Photo-Diode
- 2) Type No. PD023F00
- 3) Chip
- (1) Chip Size 2.3mm*2.3mm
- (2) Active Area 2.0mm*2.0mm
- 4) Package
- (1) Type TO-46
- (2) Lens Epoxy Resin

◆ Outer dimension (Unit: mm)



◆ Absolute Maximum Ratings [Ta=25°C]

Item	Symbol	Maximum Rated Value	Unit
Reverse Breakdown Voltage	V(BR)R	170	V
Operating Temperature	TOPR	-25 ~ +100	°C
Storage Temperature	TSTG	-30 ~ +125	°C
Soldering Temperature	TSOL	240	°C

‡Soldering condition: Soldering condition must be completed within 2 seconds at 240°C

◆ Electro-Optical Characteristics [Ta=25°C]

Item	Symbol	Condition	Minimum	Typical	Maximum	unit
Reverse Photo Current	IL	VR=10V,L=1000Lx		50		uA
Reverse Dark Current	ID	VR=10V		5	30	nA
Open Circuit Voltage	VOC	VR=10V,L=1000Lx		390		mV
Spectral Responsivity (Peak)	λP			900		nm
Half Angle of Sensitivity	θ 1/2			±60		deg.
Total Capacitance	CT	VR=10V,f=1MHZ		18		pF
Rise/Fall Time(10%~90%)	tr	RL=1KΩ,VR=10V		45		ns
	tf			45		ns